



STANNY FARM

Weather Bulletin

January 2016

A review of the month's weather recorded by the Davis Vantage Pro2 weather station

latitude 52° 08.733' N *longitude* 1° 33.313' E *elevation* 2m asl

www.stannyfarm.org/weather

Steve

3rd April 2016

Weather station data January 2016

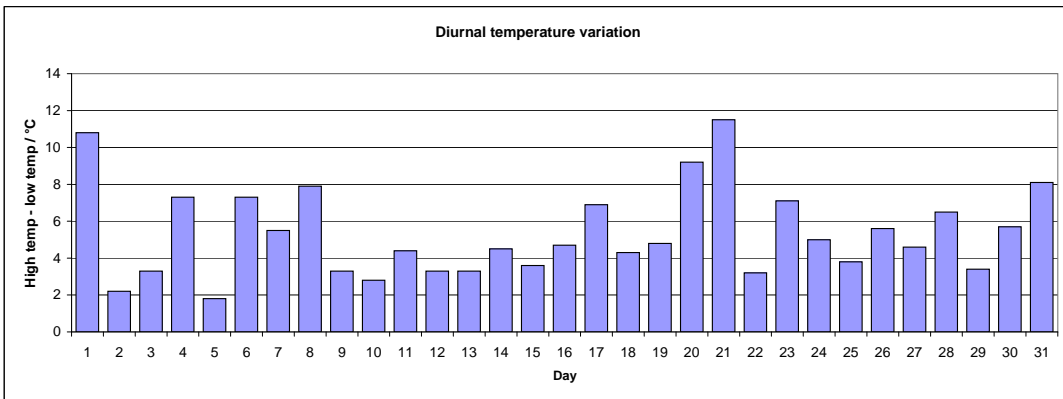
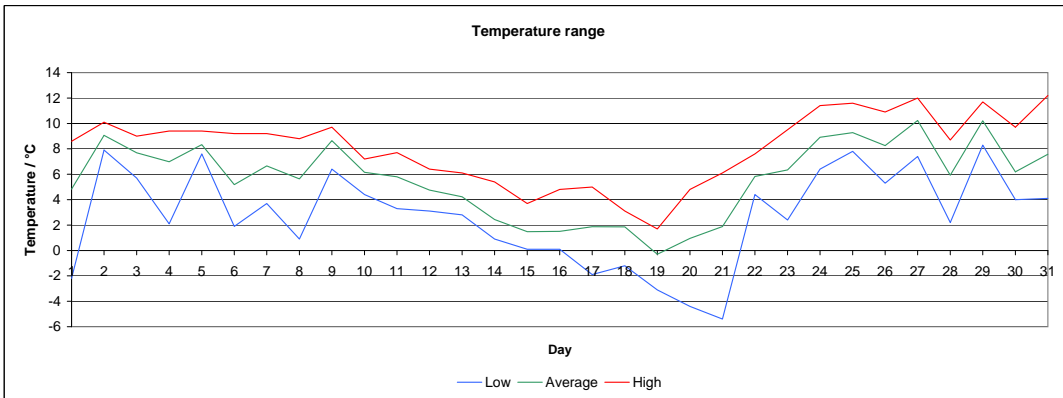
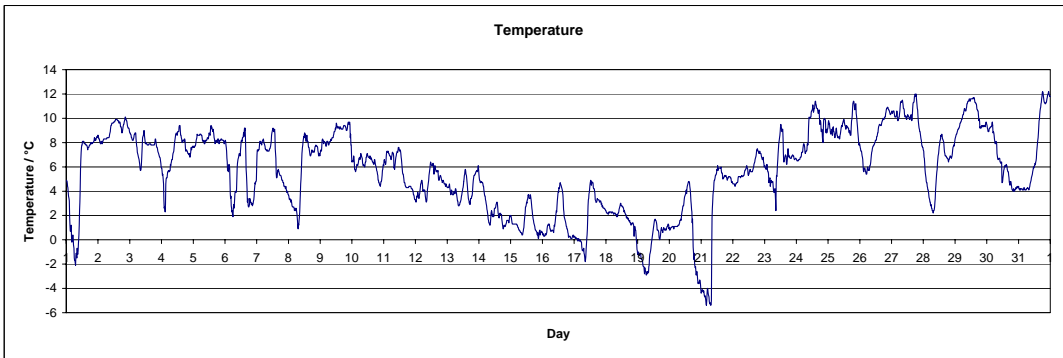
Day	Low outside temperature	Mean outside temperature	High outside temperature	Temperature range	Low outside humidity	Mean outside humidity	High outside humidity	Low outside dew point	Mean outside dew point	High outside dew point	Mean wind speed	Total wind run	High wind speed	High gust speed	Low pressure	Mean pressure	High pressure	Rainfall	High rainfall rate
	°C	°C	°C	°C	%	%	%	°C	°C	°C	km/hr	km	km/hr	km/hr	mb	mb	mb	mm	mm/hr
1	-2.2	4.8	8.6	10.8	80.0	88.8	97.0	-2.9	3.1	6.8	7.1	170.6	19.3	38.6	1007.1	1017.9	1023.0	0.0	0.0
2	7.9	9.1	10.1	2.2	85.0	91.4	96.0	6.1	7.7	9.3	12.5	300.6	17.7	37.0	996.4	1000.4	1007.0	3.0	2.4
3	5.7	7.7	9.0	3.3	87.0	92.8	96.0	4.0	6.6	8.2	12.0	287.3	20.9	48.3	982.5	991.4	998.9	8.6	1.2
4	2.1	7.0	9.4	7.3	89.0	93.3	98.0	1.7	6.0	7.9	3.8	90.9	12.9	24.1	982.0	982.9	983.5	0.2	0.0
5	7.6	8.3	9.4	1.8	90.0	92.7	95.0	6.2	7.2	8.2	6.9	165.3	16.1	32.2	982.9	985.2	986.5	5.0	0.0
6	1.9	5.2	9.2	7.3	90.0	94.8	98.0	1.2	4.4	8.2	0.0	0.0	0.0	3.2	989.7	993.6	996.0	1.0	0.0
7	3.7	6.7	9.2	5.5	78.0	87.9	97.0	0.9	4.8	8.3	15.6	373.5	33.8	64.4	979.0	987.3	996.7	6.6	0.8
8	0.9	5.6	8.8	7.9	78.0	86.8	92.0	-0.6	3.6	6.4	8.9	214.4	19.3	33.8	996.6	998.3	999.7	3.8	0.0
9	6.4	8.7	9.7	3.3	88.0	91.7	94.0	4.9	7.4	8.1	14.1	333.9	29.0	51.5	982.5	990.9	996.9	2.4	0.0
10	4.4	6.2	7.2	2.8	81.0	86.1	91.0	2.5	4.0	5.2	13.9	334.3	25.7	48.3	981.8	984.3	986.7	2.6	0.0
11	3.3	5.8	7.7	4.4	87.0	89.8	92.0	2.1	4.3	6.2	10.1	241.4	20.9	43.5	978.1	981.9	987.2	2.6	0.0
12	3.1	4.8	6.4	3.3	80.0	87.8	93.0	1.6	2.9	3.8	14.2	339.6	22.5	48.3	987.3	993.6	1004.0	1.8	0.0
13	2.8	4.2	6.1	3.3	75.0	85.9	91.0	0.7	2.1	4.1	10.6	254.3	16.1	37.0	1004.1	1010.5	1013.5	0.4	0.0
14	0.9	2.4	5.4	4.5	82.0	91.5	94.0	-0.8	1.2	3.6	15.8	378.2	30.6	57.9	999.2	1001.7	1006.8	3.2	1.2
15	0.1	1.5	3.7	3.6	76.0	84.1	92.0	-1.7	-0.9	0.7	13.4	321.1	22.5	43.5	1007.1	1015.7	1022.5	0.2	0.0
16	0.1	1.5	4.8	4.7	82.0	89.0	93.0	-1.2	-0.1	1.9	7.7	185.8	12.9	27.4	1022.5	1025.5	1027.2	0.0	0.0
17	-1.9	1.9	5.0	6.9	64.0	80.7	94.0	-2.7	-1.2	1.6	3.9	94.5	11.3	29.0	1020.7	1025.1	1027.0	0.0	0.0
18	-1.2	1.9	3.1	4.3	71.0	77.3	86.0	-3.2	-1.7	-0.8	5.4	129.5	12.9	27.4	1013.7	1015.7	1020.6	0.0	0.0
19	-3.1	-0.3	1.7	4.8	79.0	88.3	93.0	-4.4	-2.0	0.1	1.0	23.7	6.4	12.9	1014.3	1015.6	1017.2	0.0	0.0
20	-4.4	1.0	4.8	9.2	90.0	94.0	96.0	-5.2	0.1	3.6	0.6	13.6	4.8	11.3	1017.1	1019.1	1021.6	0.0	0.0
21	-5.4	1.9	6.1	11.5	75.0	84.5	98.0	-6.1	-0.6	2.6	7.7	185.5	17.7	30.6	1021.0	1021.8	1022.5	0.2	0.0
22	4.4	5.8	7.6	3.2	78.0	87.8	96.0	0.9	3.9	6.9	13.8	329.8	20.9	43.5	1013.8	1017.3	1021.5	3.4	2.8
23	2.4	6.3	9.5	7.1	90.0	94.2	97.0	1.7	5.5	8.1	7.2	172.6	17.7	35.4	1021.9	1027.5	1029.9	1.4	1.8
24	6.4	8.9	11.4	5.0	95.0	96.2	97.0	5.8	8.3	10.8	8.7	208.4	19.3	35.4	1024.1	1024.8	1026.4	1.0	2.0
25	7.8	9.3	11.6	3.8	78.0	90.3	97.0	5.4	7.7	9.3	11.5	275.2	19.3	37.0	1015.8	1019.5	1024.4	0.0	0.0
26	5.3	8.3	10.9	5.6	85.0	89.4	95.0	4.2	6.6	8.9	17.9	428.9	29.0	54.7	1008.9	1014.5	1021.6	0.0	0.0
27	7.4	10.2	12.0	4.6	76.0	88.7	94.0	4.2	8.4	10.4	19.1	457.5	27.4	48.3	1003.3	1006.8	1013.4	0.2	0.0
28	2.2	5.9	8.7	6.5	68.0	78.6	86.0	0.1	2.4	5.4	13.2	316.6	22.5	40.2	1013.9	1020.6	1023.2	0.0	0.0
29	8.3	10.2	11.7	3.4	76.0	85.4	94.0	5.5	7.8	8.7	22.4	536.4	32.2	59.5	1007.3	1013.7	1018.6	0.0	0.0
30	4.0	6.2	9.7	5.7	65.0	80.0	95.0	-0.6	2.9	8.9	14.7	362.9	25.7	45.1	1004.3	1006.7	1009.3	3.4	5.8
31	4.1	7.6	12.2	8.1	77.0	88.9	95.0	0.4	5.8	10.7	10.7	261.0	20.9	37.0	1002.0	1006.4	1009.4	1.2	0.8
MIn	-5.4	-0.3	1.7	1.8	64.0	77.3	86.0	-6.1	-2.0	-0.8	0.0	0.0	0.0	3.2	978.1	981.9	983.5	0.0	0.0
Average	2.7	5.6	8.1	5.3	80.5	88.4	94.3	1.0	3.8	6.2	10.5	251.2	19.6	38.3	1002.6	1007.0	1011.2	1.7	0.6
Max	8.3	10.2	12.2	11.5	95.0	96.2	98.0	6.2	8.4	10.8	22.4	536.4	33.8	64.4	1024.1	1027.5	1029.9	8.6	5.8

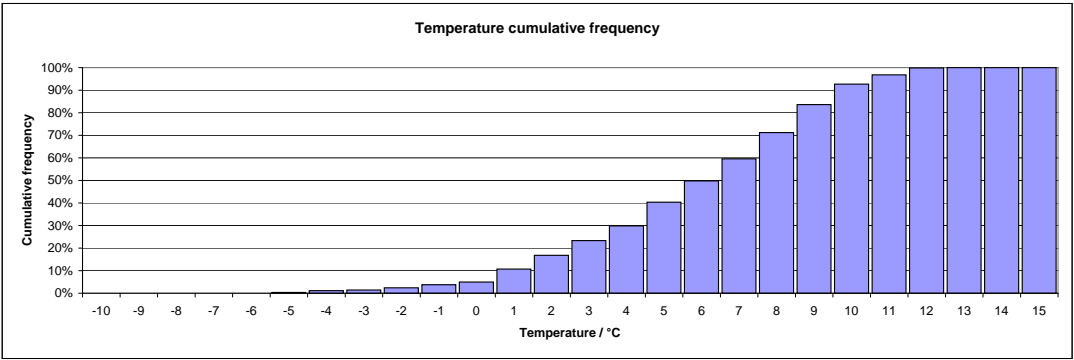
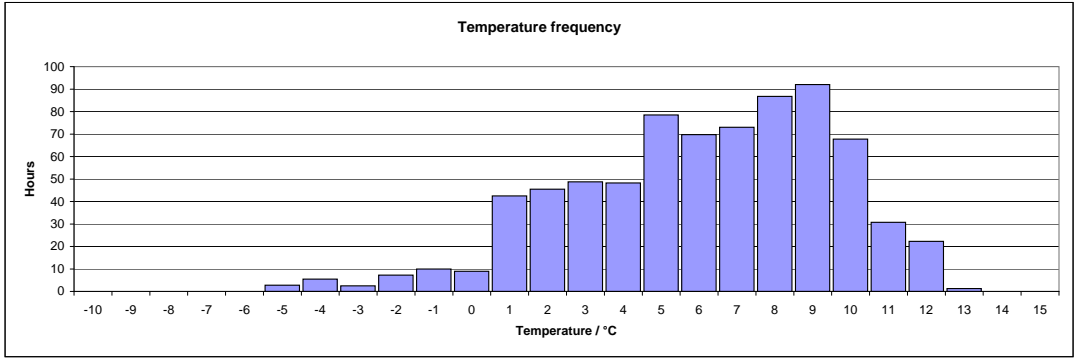
Weather station data January 2016

Part 2

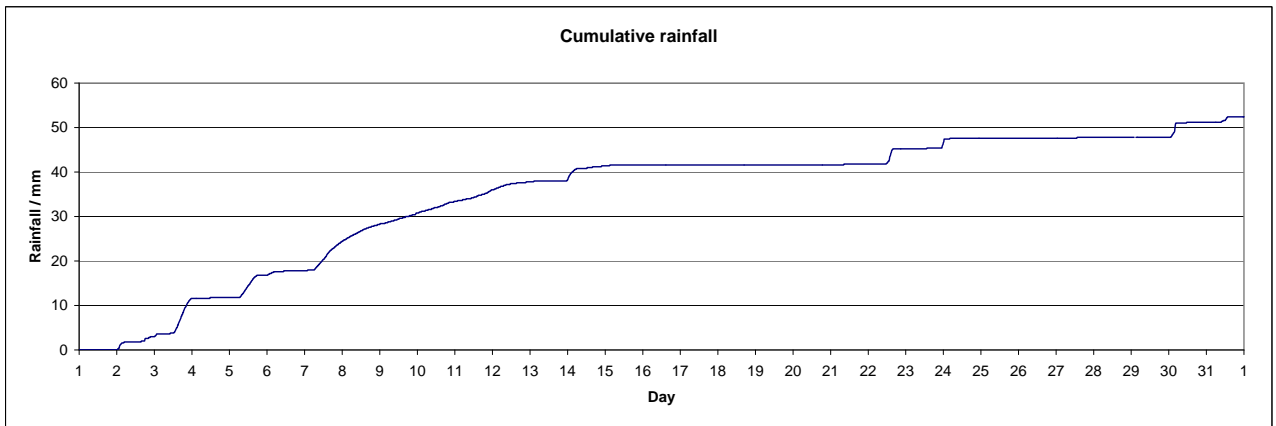
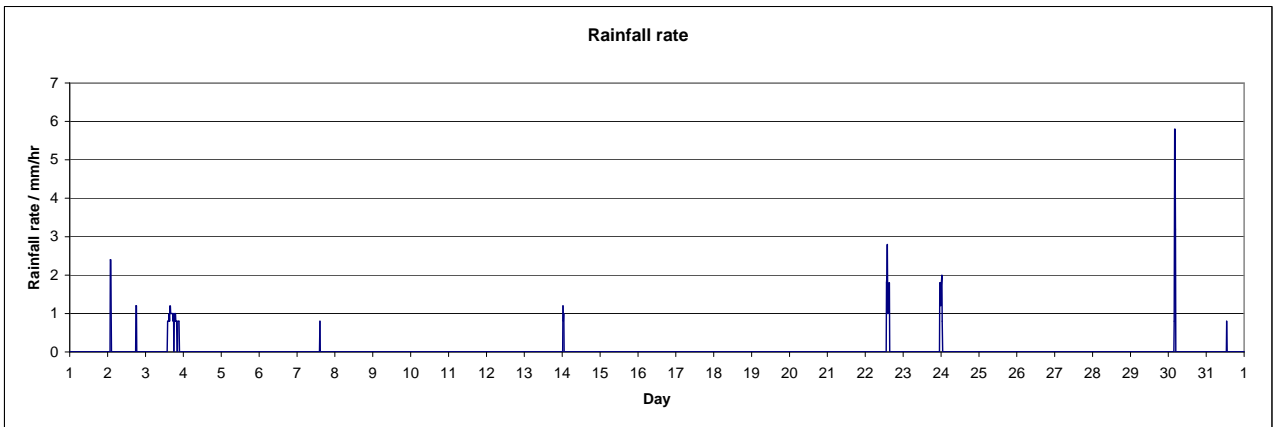
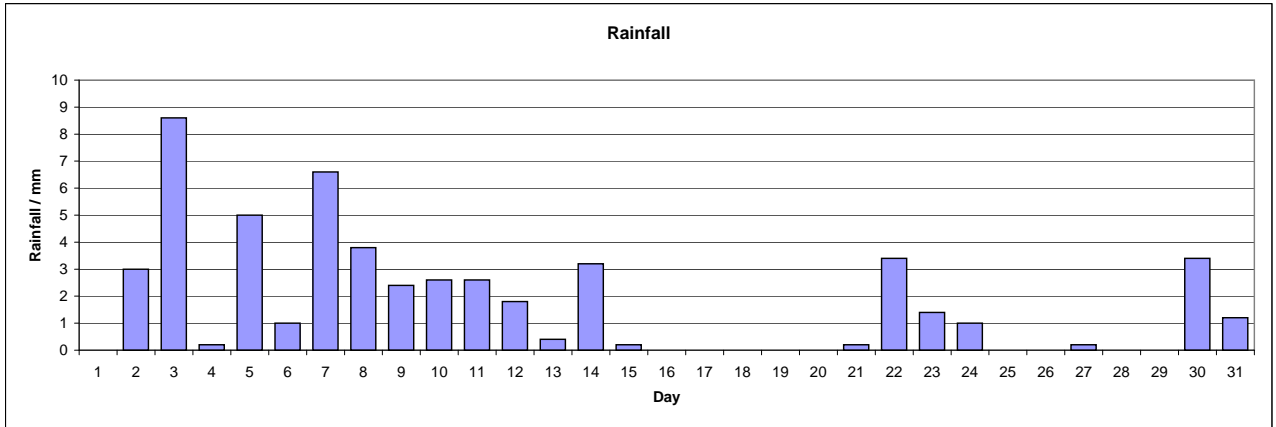
Day	Mean wind chill	Mean outside heat index	Mean THW index	Inside low temperature	Mean inside temperature	Inside high temperature	Mean inside humidity	Mean inside dew point	Mean inside heat index	Mean inside EMC	Mean inside air density	Wind samples	Wind transmission	Mean ISS reception
	°C	°C	°C	°C	°C	°C	%	°C	°C					%
1	3.6	4.8	3.5	15.2	16.8	19.4	57.8	8.4	16.1	10.7	1.210	33648	1	100.0
2	7.0	9.2	7.2	15.2	17.1	19.1	58.8	8.9	16.4	10.9	1.188	33681	1	100.0
3	5.6	7.8	5.7	15.9	17.1	19.2	58.7	9.0	16.5	10.9	1.177	33671	1	100.0
4	6.5	7.1	6.6	15.0	17.3	19.2	57.5	8.9	16.7	10.7	1.166	33666	1	100.0
5	7.4	8.5	7.5	15.7	18.1	20.6	57.7	9.6	17.5	10.7	1.165	33668	1	100.0
6	5.2	5.2	5.2	15.9	17.4	18.9	57.8	9.0	16.7	10.7	1.178	33663	1	100.0
7	3.8	6.7	3.8	15.1	17.3	20.1	56.4	8.6	16.7	10.5	1.171	33674	1	100.0
8	3.8	5.6	3.8	13.9	16.9	19.3	54.7	7.7	16.1	10.2	1.187	33665	1	100.0
9	6.3	8.8	6.4	14.9	17.6	19.7	54.9	8.4	16.9	10.3	1.175	33313	1	100.0
10	3.4	6.1	3.3	15.4	17.6	19.7	54.3	8.3	16.8	10.2	1.167	33675	1	100.0
11	3.8	5.8	3.7	15.1	17.2	19.6	53.4	7.7	16.4	10.0	1.166	33671	1	100.0
12	1.6	4.7	1.6	14.2	16.6	19.0	51.9	6.7	15.7	9.7	1.183	33671	1	100.0
13	1.7	4.1	1.6	13.8	16.7	18.7	50.8	6.5	15.8	9.5	1.203	33667	1	100.0
14	-1.2	2.4	-1.3	13.8	16.5	19.2	49.6	5.9	15.5	9.3	1.194	33641	1	100.0
15	-2.1	1.3	-2.2	12.5	15.7	18.0	48.7	5.0	14.6	9.2	1.215	33639	1	100.0
16	-0.7	1.4	-0.8	12.8	16.6	20.1	47.4	5.3	15.5	9.0	1.223	33656	1	100.0
17	0.9	1.7	0.7	13.5	17.1	21.3	46.9	5.7	16.0	8.9	1.220	33663	1	100.0
18	0.4	1.6	0.2	13.5	16.7	19.5	46.6	5.2	15.5	8.8	1.211	33675	1	100.0
19	-0.4	-0.4	-0.5	13.0	16.3	19.1	46.2	4.7	15.1	8.8	1.213	33631	1	100.0
20	0.9	0.9	0.9	13.0	16.7	19.6	46.3	5.1	15.6	8.8	1.215	33638	1	100.0
21	0.2	1.7	0.1	13.0	16.8	20.7	46.3	5.2	15.7	8.8	1.217	33471	1	99.5
22	3.0	5.8	3.0	13.7	17.3	20.1	46.4	5.7	16.2	8.8	1.210	33664	1	100.0
23	5.1	6.4	5.1	14.9	17.6	19.7	47.6	6.3	16.5	9.0	1.221	33665	1	100.0
24	7.7	9.1	7.9	15.1	17.7	19.7	49.5	7.0	16.7	9.3	1.216	33673	1	100.0
25	7.5	9.4	7.6	16.1	17.8	19.6	50.8	7.5	16.9	9.5	1.209	33681	1	100.0
26	5.3	8.3	5.3	15.6	17.6	19.6	51.1	7.4	16.7	9.6	1.204	33665	1	100.0
27	7.2	10.3	7.3	15.9	18.0	19.7	52.2	8.0	17.1	9.8	1.193	33670	1	100.0
28	3.2	5.7	3.0	15.6	17.6	19.5	51.3	7.4	16.7	9.6	1.211	33671	1	100.0
29	6.7	10.2	6.7	15.4	17.9	20.2	53.9	8.4	17.2	10.1	1.201	35082	1	100.0
30	3.2	6.1	3.1	15.3	17.2	18.7	53.7	7.7	16.3	10.1	1.196	33621	1	99.9
31	5.7	7.6	5.7	14.4	17.1	18.9	53.4	7.5	16.2	10.0	1.196	32281	1	100.0
MIn	-2.1	-0.4	-2.2	12.5	15.7	18.0	46.2	4.7	14.6	8.8	1.2	32281.0	1.0	99.5
Average	3.6	5.6	3.6	14.6	17.2	19.5	52.0	7.2	16.3	9.8	1.2	33645.8	1.0	100.0
Max	7.7	10.3	7.9	16.1	18.1	21.3	58.8	9.6	17.5	10.9	1.2	35082.0	1.0	100.0

January 2016

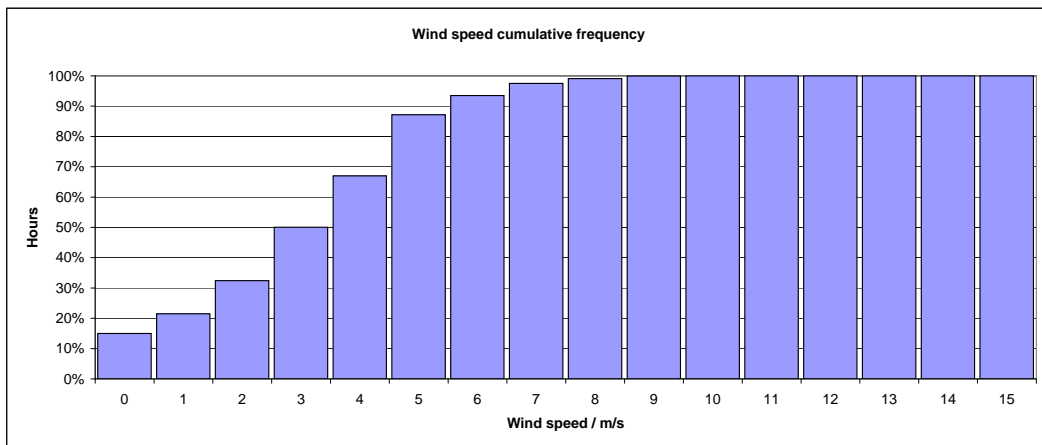
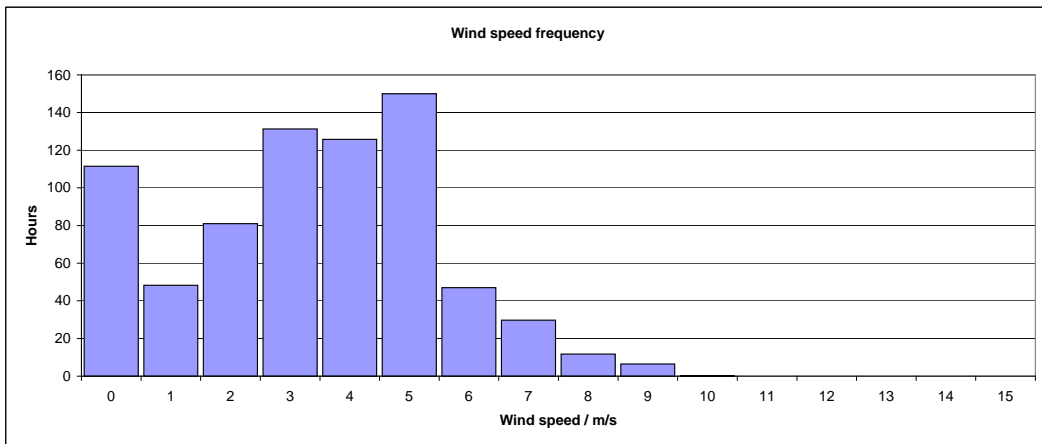
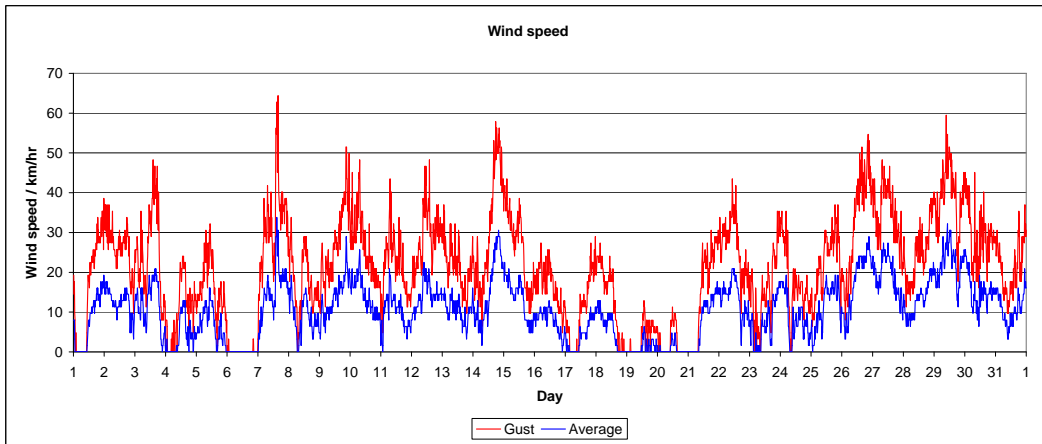




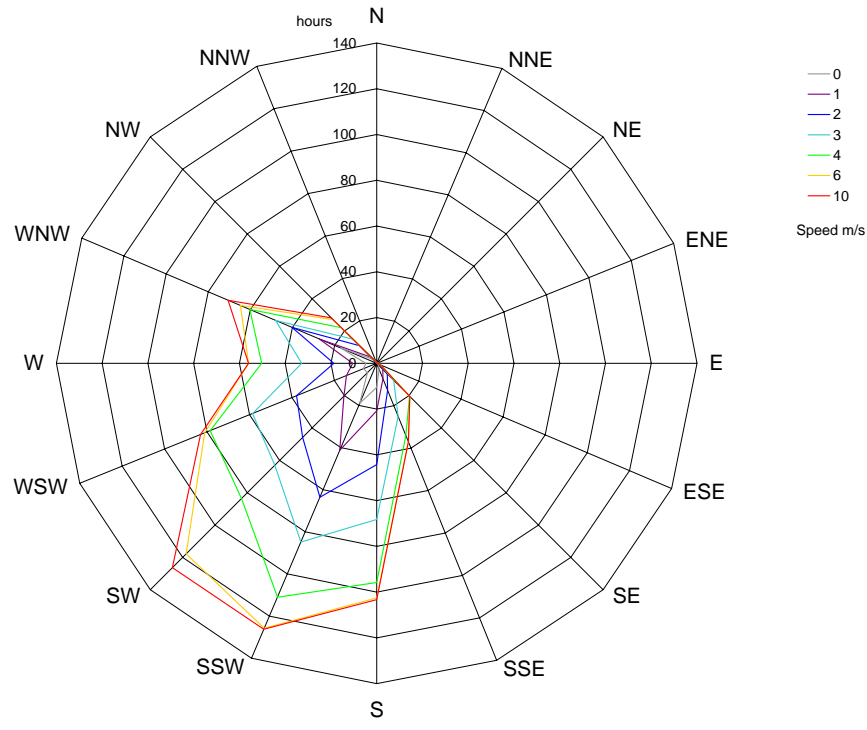
January 2016



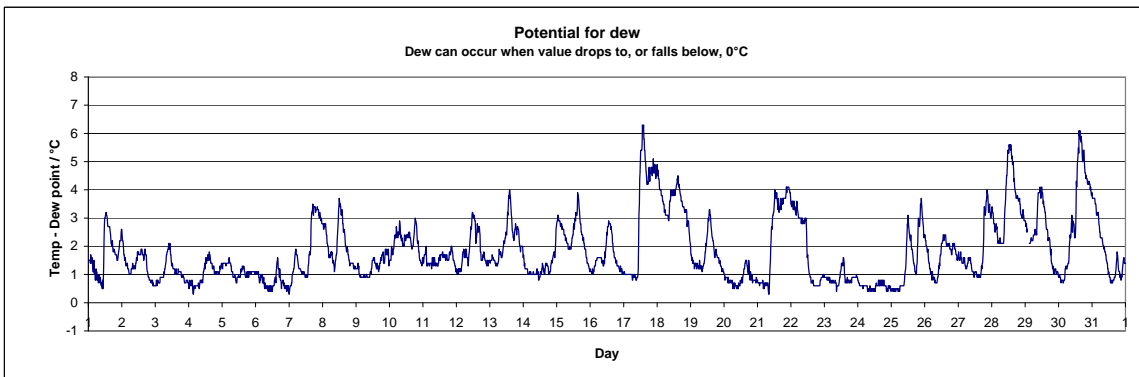
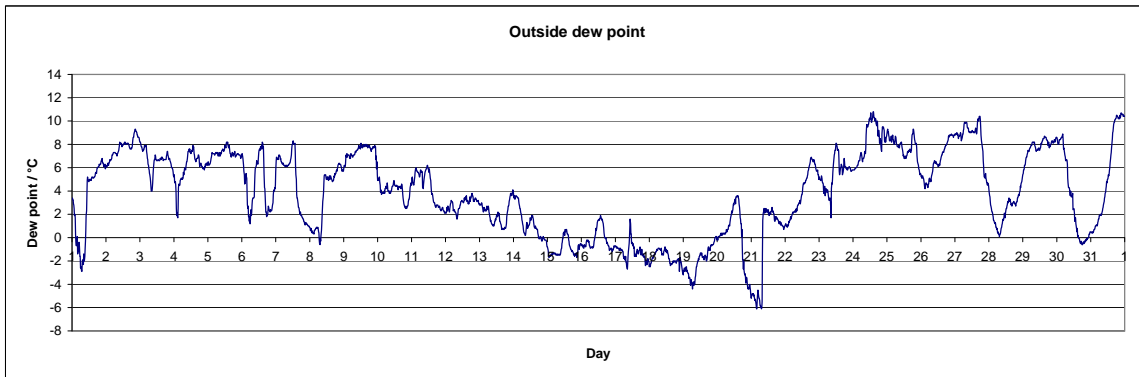
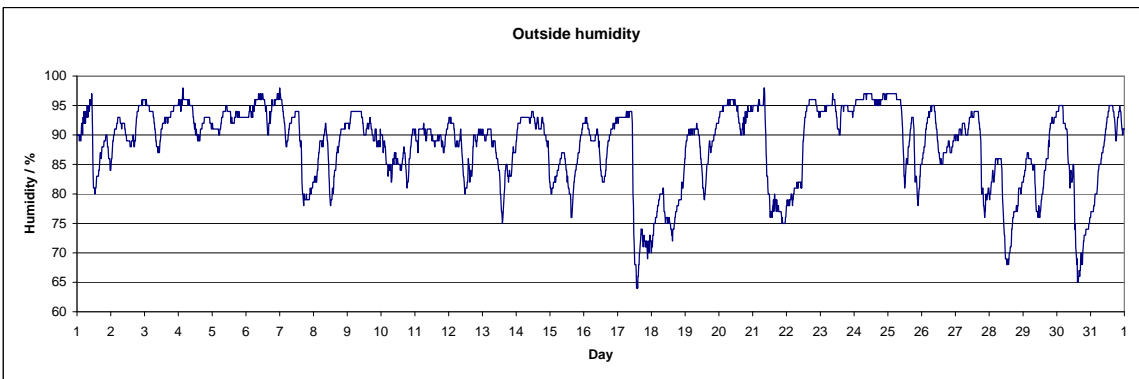
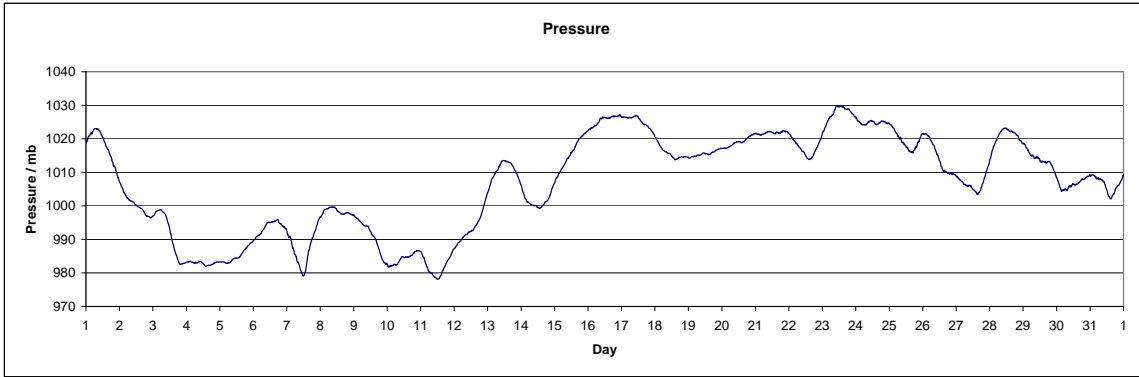
January 2016



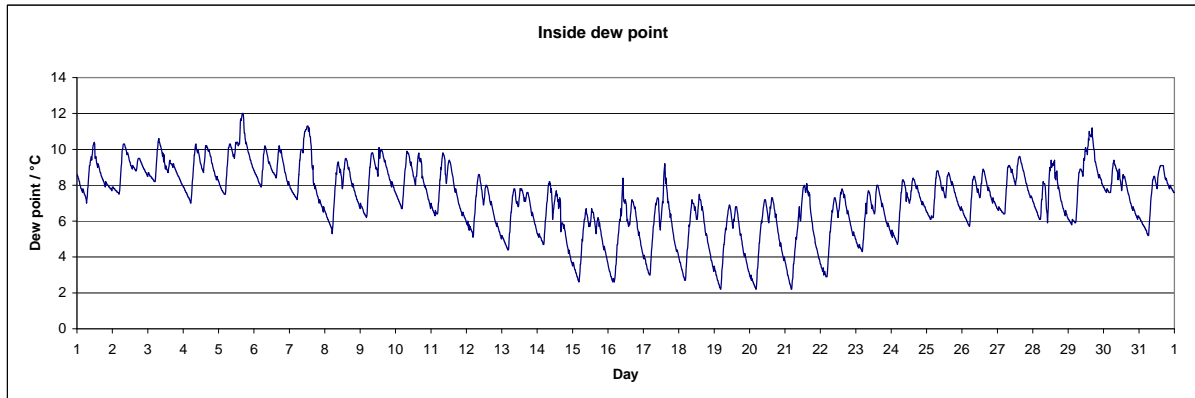
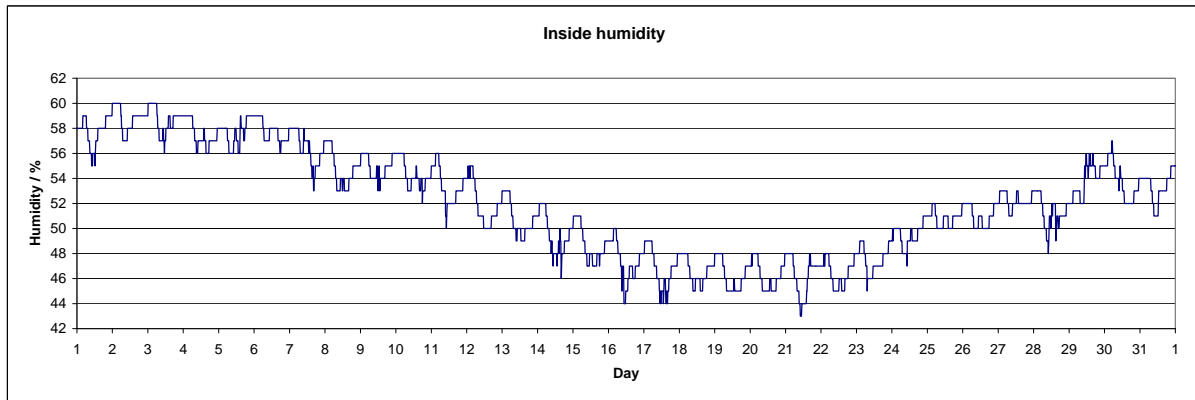
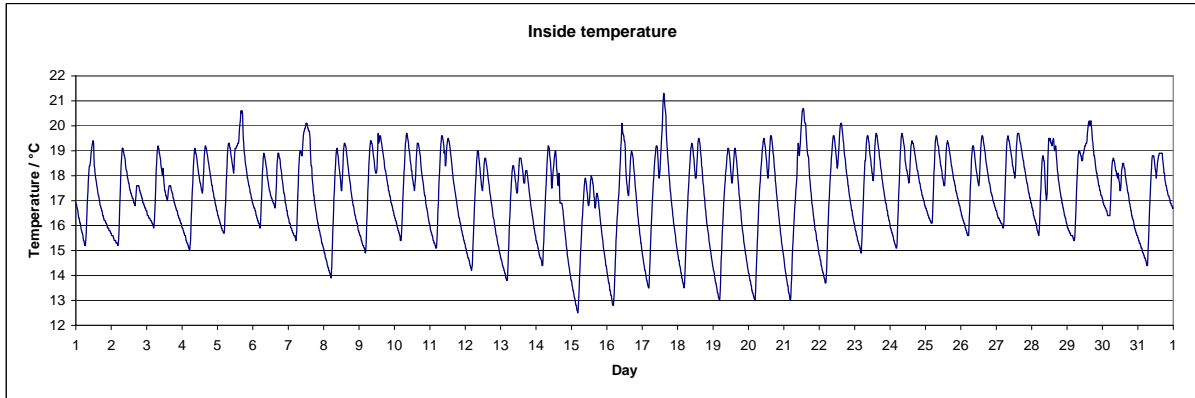
Distribution of wind speed and direction



January 2016



January 2016



January 2016

