



STANNY FARM

# Weather Bulletin

February 2016

---

A review of the month's weather recorded by the Davis Vantage Pro2 weather station

*latitude 52° 08.733' N longitude 1° 33.313' E elevation 2m asl*

[www.stannyfarm.org/weather](http://www.stannyfarm.org/weather)

*Steve*

3<sup>rd</sup> April 2016

Weather station data February 2016

Part 1

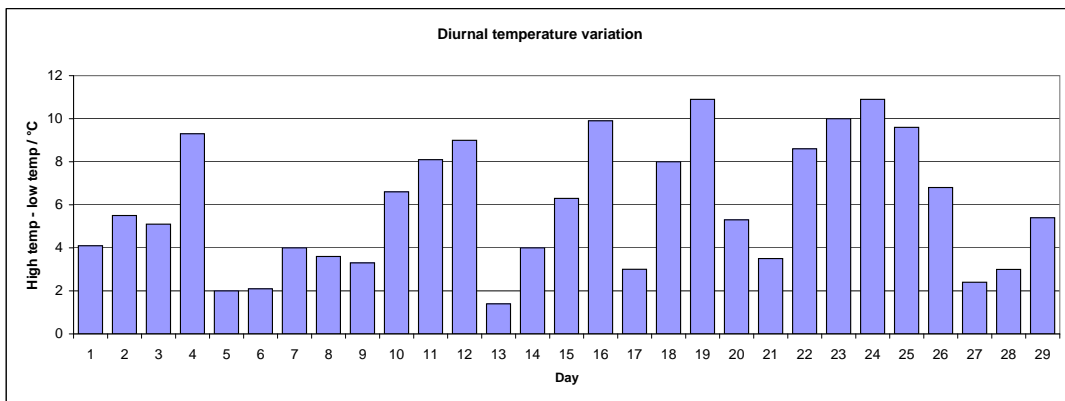
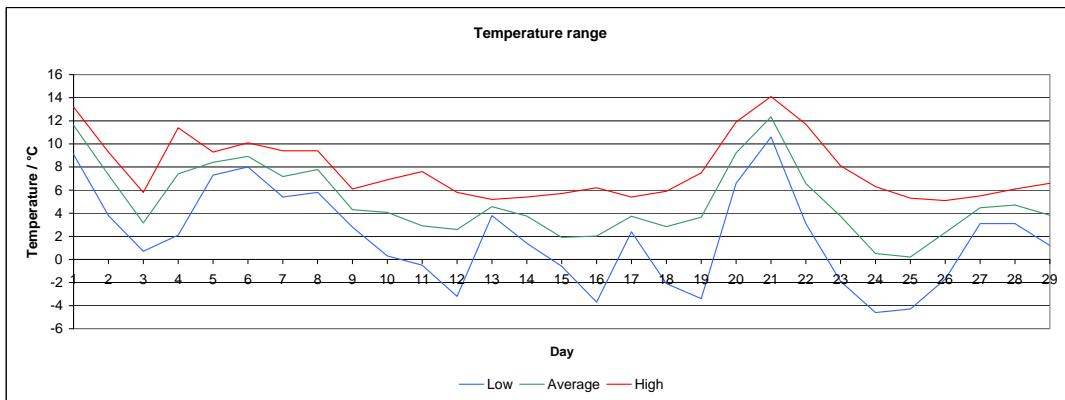
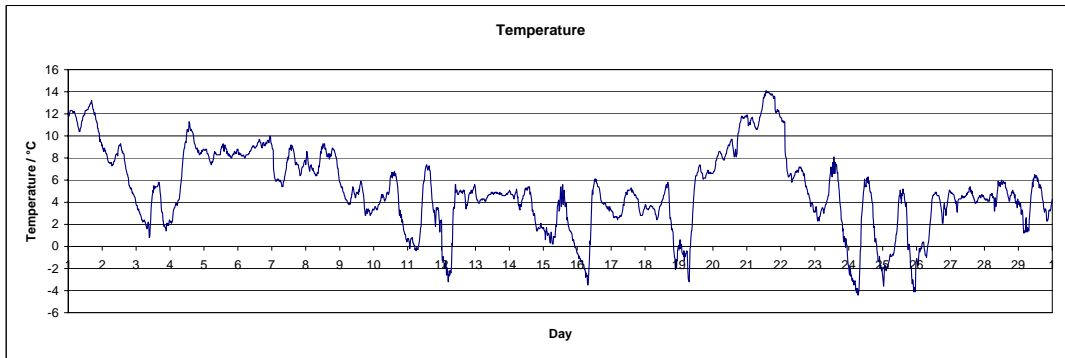
Day	Low outside temperature	Mean outside temperature	High outside temperature	Temperature range	Low outside humidity	Mean outside humidity	High outside humidity	Low outside dew point	Mean outside dew point	High outside dew point	Mean wind speed	Total wind run	High wind speed	High gust speed	Low pressure	Mean pressure	High pressure	Rainfall	High rainfall rate
	°C	°C	°C	°C	%	%	%	°C	°C	°C	km/hr	km	km/hr	km/hr	mb	mb	mb	mm	mm/hr
1	9.1	11.6	13.2	4.1	62.0	78.4	91.0	4.1	7.9	10.5	23.3	559.3	33.8	64.4	1009.3	1011.1	1011.9	0.2	0.0
2	3.8	7.3	9.3	5.5	56.0	69.7	82.0	-0.5	2.1	4.3	18.5	445.0	27.4	57.9	1009.3	1011.6	1014.0	0.0	0.0
3	0.7	3.2	5.8	5.1	78.0	85.1	92.0	-0.9	0.9	3.0	9.7	232.6	16.1	35.4	1013.9	1018.8	1025.8	1.2	2.4
4	2.1	7.4	11.4	9.3	75.0	88.0	94.0	0.5	5.5	8.4	9.0	216.8	17.7	40.2	1017.8	1021.7	1025.0	2.2	1.8
5	7.3	8.4	9.3	2.0	85.0	92.1	95.0	6.3	7.2	8.4	12.0	287.2	22.5	40.2	1008.5	1016.6	1023.1	0.2	0.0
6	8.0	8.9	10.1	2.1	79.0	87.3	92.0	6.2	6.9	7.4	20.2	484.9	29.0	51.5	986.6	998.2	1008.2	0.2	0.0
7	5.4	7.2	9.4	4.0	66.0	81.8	94.0	3.0	4.2	7.2	20.2	484.5	35.4	67.6	983.0	990.6	994.0	2.6	3.0
8	5.8	7.8	9.4	3.6	68.0	77.6	94.0	1.7	4.1	7.1	25.9	621.6	38.6	70.8	980.1	983.5	991.5	6.0	2.8
9	2.8	4.3	6.1	3.3	72.0	81.7	91.0	-0.7	1.4	3.5	10.4	246.6	22.5	40.2	981.9	985.9	991.4	1.4	2.2
10	0.3	4.1	6.9	6.6	74.0	85.4	91.0	-1.5	1.8	4.3	8.2	195.9	14.5	29.0	987.0	994.0	1001.8	0.0	0.0
11	-0.5	2.9	7.6	8.1	68.0	85.6	92.0	-1.8	0.7	3.0	2.8	66.8	9.7	17.7	1000.0	1002.4	1003.5	0.0	0.0
12	-3.2	2.6	5.8	9.0	80.0	89.1	97.0	-4.0	1.0	4.8	2.3	56.3	8.0	20.9	994.2	996.2	999.9	1.6	1.0
13	3.8	4.6	5.2	1.4	77.0	82.8	88.0	0.5	1.9	2.8	12.4	296.6	19.3	33.8	984.0	987.4	994.0	0.0	0.0
14	1.4	3.8	5.4	4.0	70.0	83.5	92.0	-1.5	1.2	2.5	15.0	359.6	22.5	41.8	986.5	995.4	1009.1	0.8	1.2
15	-0.6	1.9	5.7	6.3	79.0	87.8	93.0	-2.1	0.1	3.5	7.1	169.7	14.5	33.8	1009.4	1022.4	1033.3	2.4	0.0
16	-3.7	2.0	6.2	9.9	77.0	86.8	96.0	-4.3	0.0	4.2	5.5	132.7	14.5	25.7	1027.7	1032.7	1035.0	0.4	0.0
17	2.4	3.7	5.4	3.0	71.0	79.6	93.0	-1.2	0.5	2.5	10.1	241.4	16.1	27.4	1009.1	1016.7	1027.5	0.0	0.0
18	-2.1	2.8	5.9	8.0	76.0	90.0	95.0	-3.9	1.3	3.7	3.3	80.0	9.7	17.7	1008.2	1012.2	1016.5	2.8	0.0
19	-3.4	3.7	7.5	10.9	80.0	87.6	95.0	-4.5	1.8	5.9	10.7	257.8	24.1	41.8	1006.4	1014.2	1017.6	0.0	0.0
20	6.6	9.2	11.9	5.3	78.0	88.3	95.0	5.7	7.3	9.4	15.3	366.1	22.5	45.1	1003.4	1005.8	1008.0	0.6	0.0
21	10.6	12.3	14.1	3.5	79.0	85.1	91.0	8.9	9.9	11.1	20.4	490.9	29.0	54.7	1003.7	1006.0	1008.3	0.0	0.0
22	3.1	6.6	11.7	8.6	69.0	82.6	94.0	0.1	3.8	9.3	7.9	189.3	20.9	40.2	1003.7	1006.9	1010.2	1.0	7.4
23	-1.9	3.7	8.1	10.0	67.0	83.8	91.0	-3.4	1.2	4.4	5.1	123.5	12.9	25.7	1010.3	1015.1	1020.0	0.0	0.0
24	-4.6	0.5	6.3	10.9	57.0	81.1	96.0	-5.4	-2.6	2.7	0.8	18.1	6.4	14.5	1014.3	1016.8	1020.0	0.2	0.0
25	-4.3	0.2	5.3	9.6	56.0	79.4	93.0	-6.5	-3.1	0.4	3.1	74.0	12.9	22.5	1013.5	1014.6	1015.4	0.0	0.0
26	-1.7	2.3	5.1	6.8	62.0	74.6	87.0	-4.1	-1.8	1.5	1.8	43.4	8.0	17.7	1007.4	1010.2	1014.4	0.0	0.0
27	3.1	4.5	5.5	2.4	62.0	69.5	77.0	-2.2	-0.6	1.2	15.9	381.8	22.5	37.0	1007.4	1011.2	1015.7	0.0	0.0
28	3.1	4.7	6.1	3.0	68.0	76.3	86.0	-1.0	0.9	2.2	17.0	407.2	24.1	38.6	1015.8	1020.7	1025.2	0.4	0.0
29	1.2	3.8	6.6	5.4	66.0	79.6	89.0	-1.0	0.6	2.1	5.4	128.7	16.1	22.5	1022.7	1025.2	1026.5	0.2	0.0
MIn	-4.6	0.2	5.1	1.4	56.0	69.5	77.0	-6.5	-3.1	0.4	0.8	18.1	6.4	14.5	980.1	983.5	991.4	0.0	0.0
Average	1.9	5.0	7.8	5.9	70.9	82.8	91.6	-0.5	2.3	4.9	11.0	264.1	19.7	37.1	1003.6	1008.4	1013.3	0.8	0.8
Max	10.6	12.3	14.1	10.9	85.0	92.1	97.0	8.9	9.9	11.1	25.9	621.6	38.6	70.8	1027.7	1032.7	1035.0	6.0	7.4

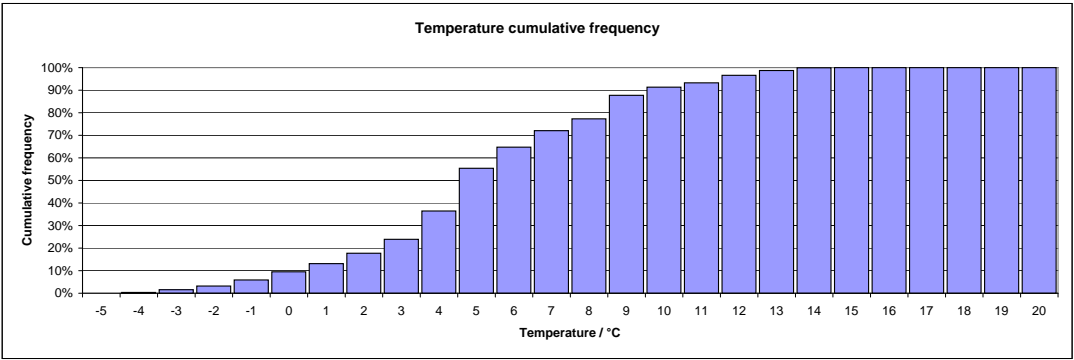
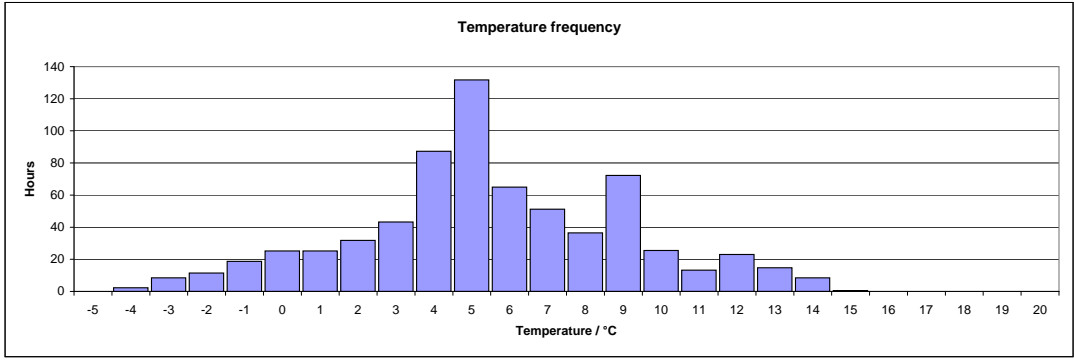
# Weather station data February 2016

# Part 2

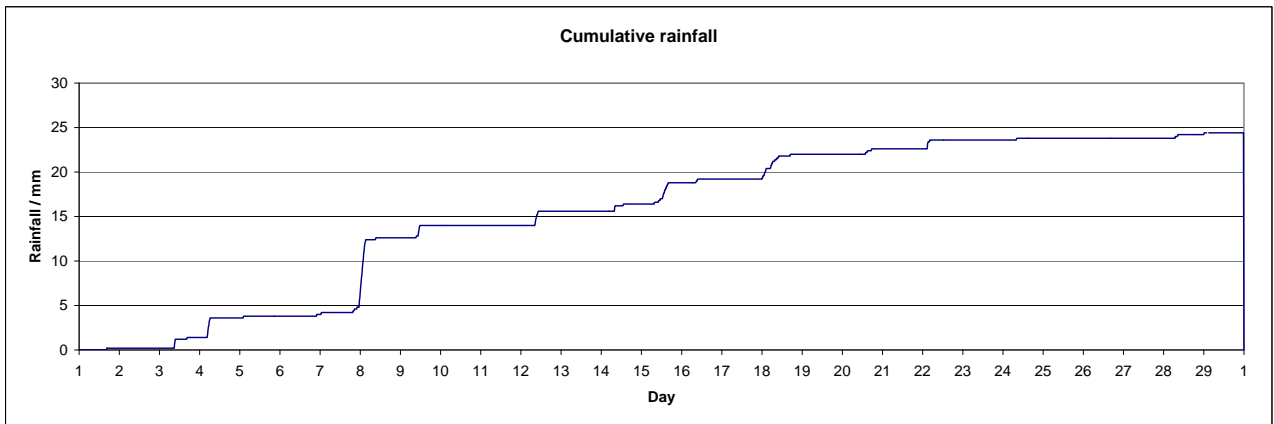
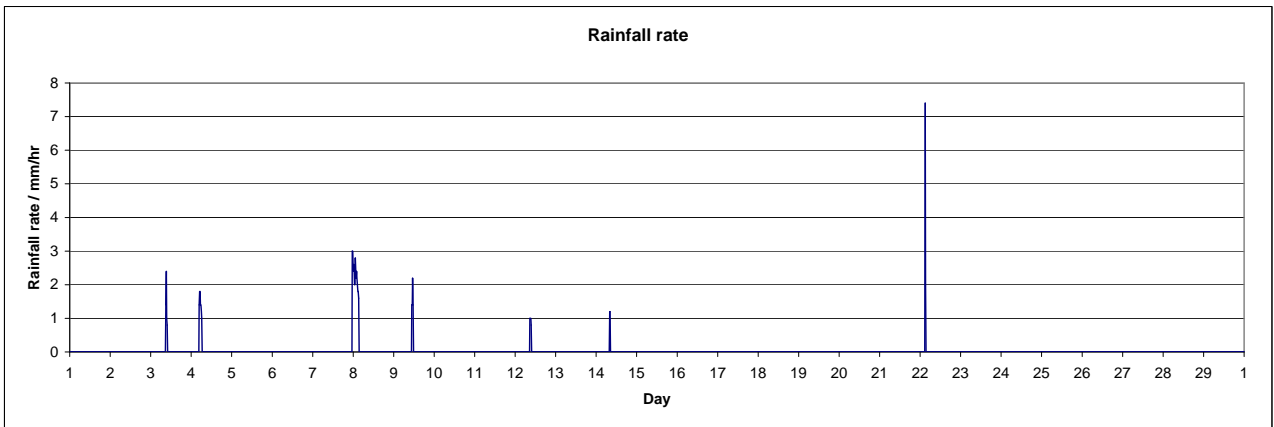
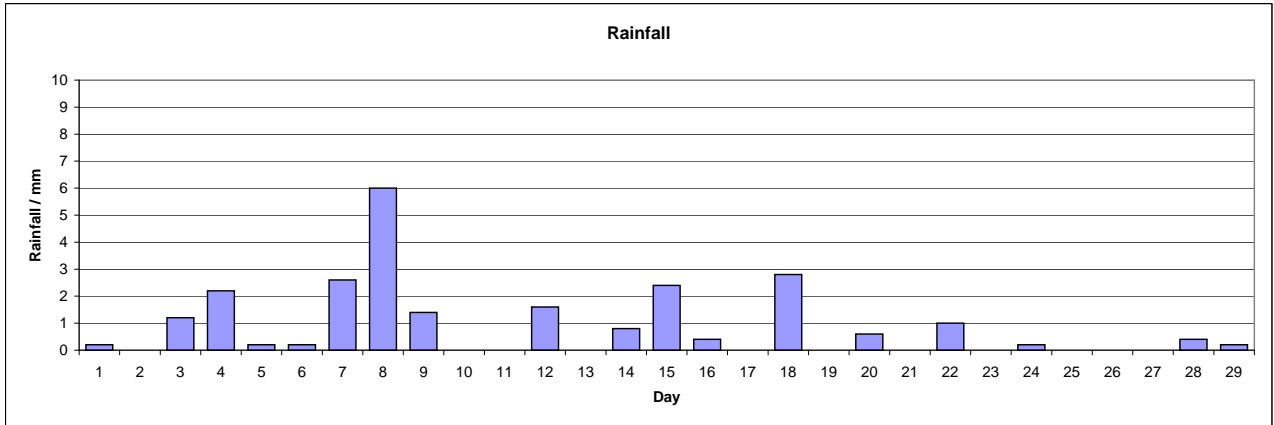
Day	Mean wind chill	Mean outside heat index	Mean THW index	Inside low temperature	Mean inside temperature	Inside high temperature	Mean inside humidity	Mean inside dew point	Mean inside heat index	Mean inside EMC	Mean inside air density	Wind samples	Wind transmission	Mean ISS reception
	°C	°C	°C	°C	°C	°C	%	°C	°C					%
1	8.3	11.5	8.1	16.3	17.6	19.0	53.3	8.0	16.8	10.0	1.199	33641	1	99.9
2	3.9	7.0	3.6	14.9	16.8	18.8	49.7	6.2	15.8	9.3	1.204	33680	1	100.0
3	0.7	3.0	0.6	13.9	16.2	18.5	48.7	5.4	15.1	9.2	1.216	33665	1	100.0
4	5.7	7.4	5.8	13.4	16.6	19.4	48.7	5.8	15.6	9.2	1.218	33668	1	100.0
5	6.4	8.5	6.6	15.0	17.5	19.6	50.0	7.0	16.6	9.4	1.207	33690	1	100.0
6	5.5	9.0	5.6	15.6	17.9	19.8	50.9	7.6	17.0	9.5	1.183	33677	1	100.0
7	3.7	7.1	3.6	15.7	17.6	19.7	49.4	6.9	16.6	9.3	1.176	33644	1	100.0
8	3.6	7.6	3.5	15.2	17.5	19.3	48.4	6.5	16.4	9.1	1.168	33677	1	100.0
9	2.0	4.2	1.9	15.0	17.6	20.9	46.9	6.1	16.5	8.9	1.171	33313	1	100.0
10	2.2	4.0	2.1	14.6	17.0	20.1	47.5	5.8	15.9	9.0	1.183	33647	1	100.0
11	2.3	2.8	2.2	14.0	16.8	19.3	49.0	6.0	15.7	9.2	1.194	33651	1	100.0
12	2.2	2.5	2.1	13.4	16.4	18.8	48.3	5.4	15.3	9.1	1.188	33643	1	100.0
13	1.8	4.4	1.7	13.9	17.1	20.3	46.7	5.6	15.9	8.9	1.175	33653	1	100.0
14	0.3	3.6	0.2	13.2	15.5	18.0	47.0	4.2	14.3	9.0	1.192	33660	1	100.0
15	0.0	1.8	-0.1	12.4	15.0	18.0	47.5	3.9	13.9	9.0	1.227	33649	1	100.0
16	0.7	1.9	0.6	12.2	16.3	20.0	45.7	4.5	15.1	8.7	1.233	33660	1	100.0
17	1.2	3.6	1.1	13.4	16.7	19.7	44.8	4.6	15.5	8.6	1.212	33634	1	100.0
18	2.1	2.8	2.1	13.8	16.3	18.8	46.3	4.7	15.1	8.8	1.209	33647	1	100.0
19	1.6	3.6	1.5	12.7	17.4	20.7	46.3	5.7	16.2	8.8	1.206	33647	1	100.0
20	6.7	9.3	6.7	15.6	17.7	19.2	50.0	7.1	16.7	9.4	1.193	33676	1	100.0
21	9.4	12.3	9.4	16.7	18.0	19.5	55.0	8.8	17.3	10.3	1.191	33685	1	100.0
22	5.3	6.5	5.2	11.7	16.1	18.4	50.9	5.9	15.1	9.6	1.202	33673	1	100.0
23	2.7	3.6	2.6	10.4	13.2	17.1	48.3	2.5	12.2	9.2	1.227	33668	1	100.0
24	0.4	0.3	0.2	9.9	13.9	18.7	45.8	2.4	12.8	8.8	1.226	33604	1	100.0
25	-0.5	0.0	-0.7	12.9	16.2	19.1	44.3	4.0	14.9	8.5	1.213	33621	1	100.0
26	2.1	2.1	1.8	12.8	16.4	19.2	44.1	4.1	15.1	8.5	1.206	33660	1	100.0
27	1.1	4.1	0.8	13.8	16.9	19.7	43.0	4.2	15.6	8.3	1.205	33663	1	100.0
28	1.1	4.5	0.9	13.6	16.0	18.8	42.8	3.3	14.6	8.3	1.221	33601	1	100.0
29	2.7	3.6	2.5	12.9	16.2	18.7	43.8	3.8	14.9	8.4	1.225	33302	1	100.0
MIn	-0.5	0.0	-0.7	9.9	13.2	17.1	42.8	2.4	12.2	8.3	1.2	33302.0	1.0	99.9
Average	2.9	4.9	2.8	13.8	16.6	19.2	47.7	5.4	15.5	9.0	1.2	33631.0	1.0	100.0
Max	9.4	12.3	9.4	16.7	18.0	20.9	55.0	8.8	17.3	10.3	1.2	33690.0	1.0	100.0

## February 2016

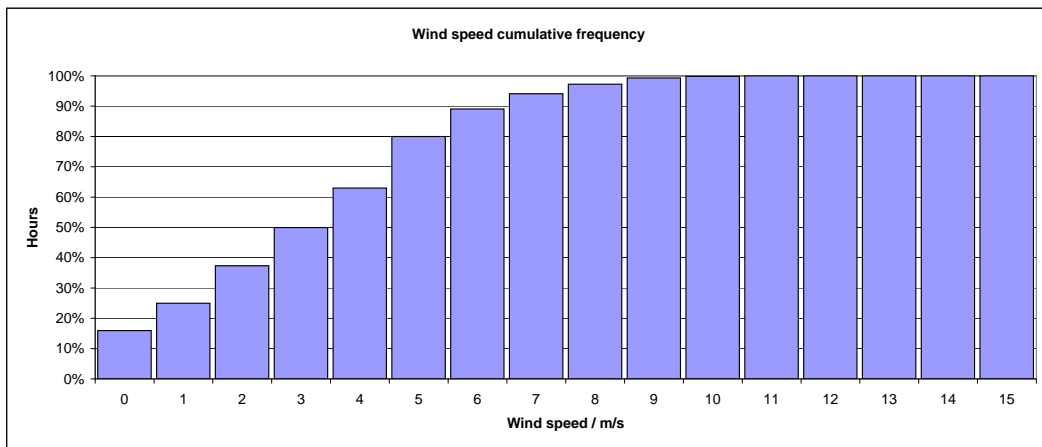
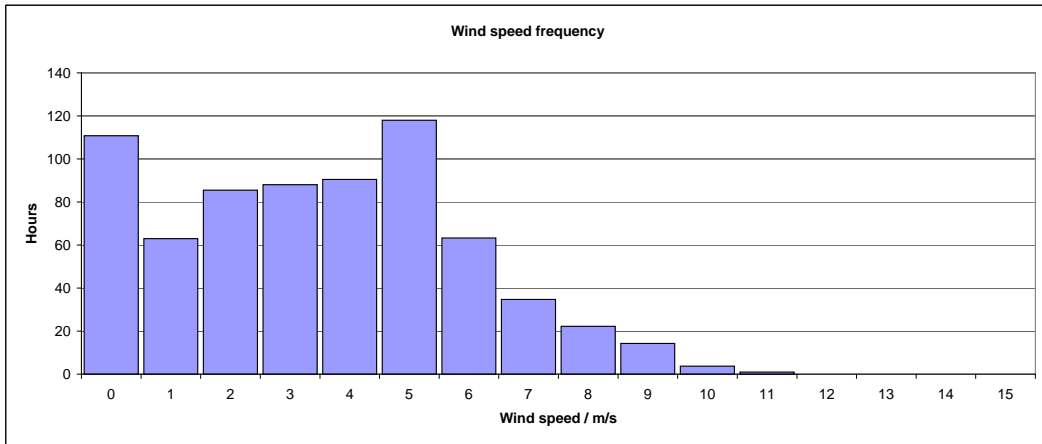
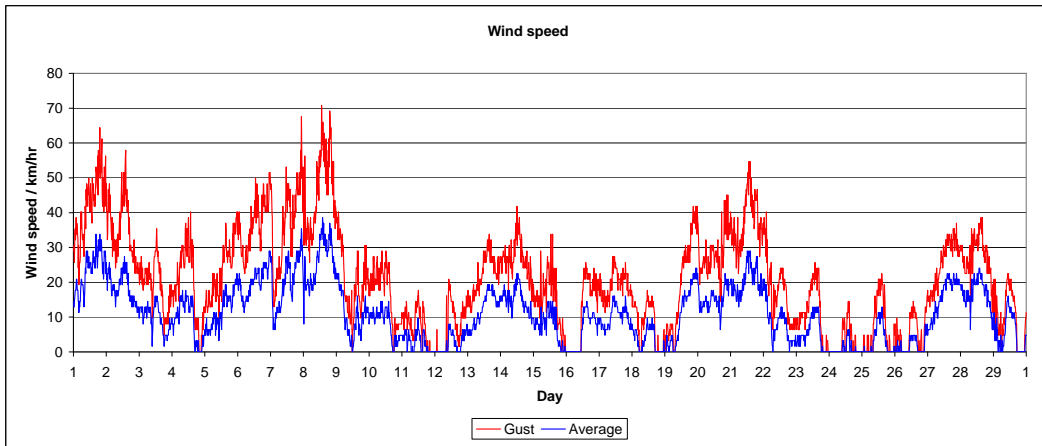




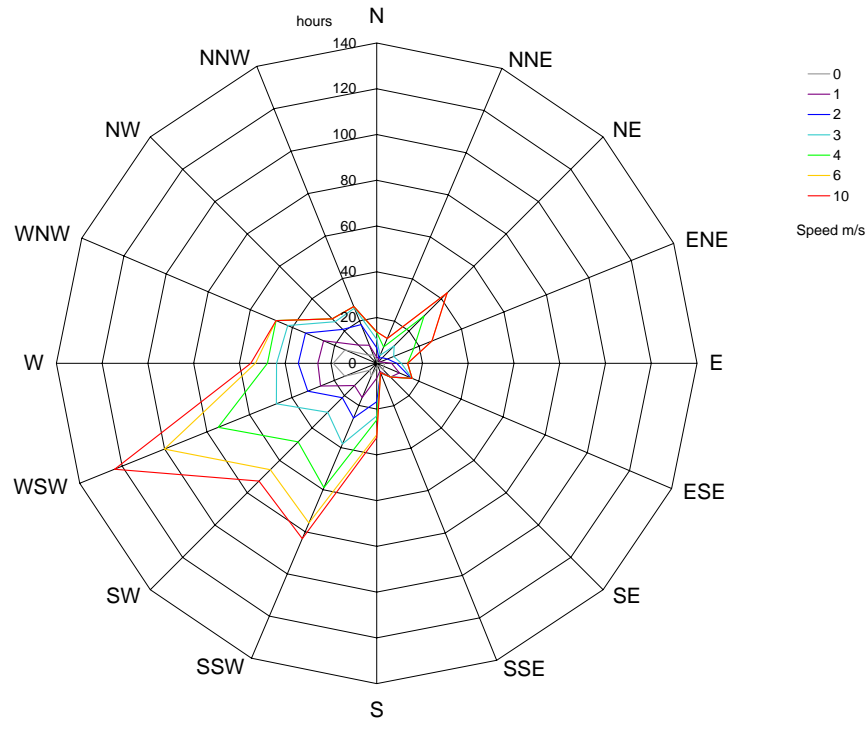
## February 2016



February 2016

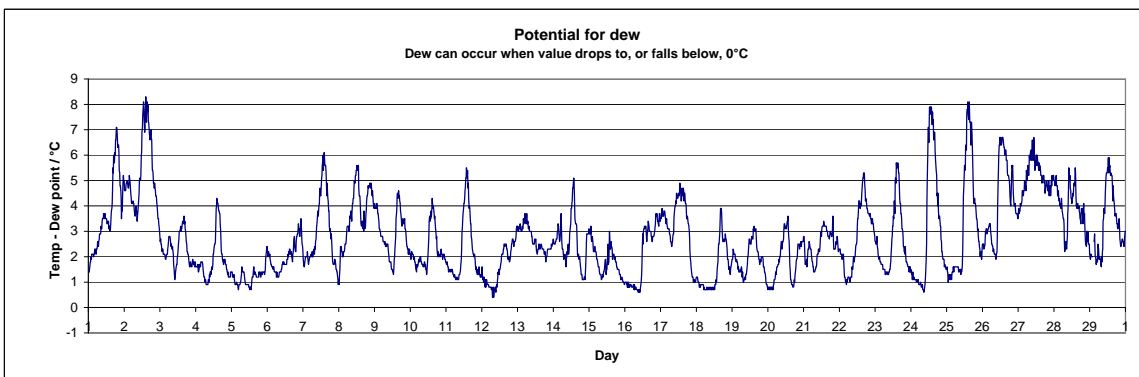
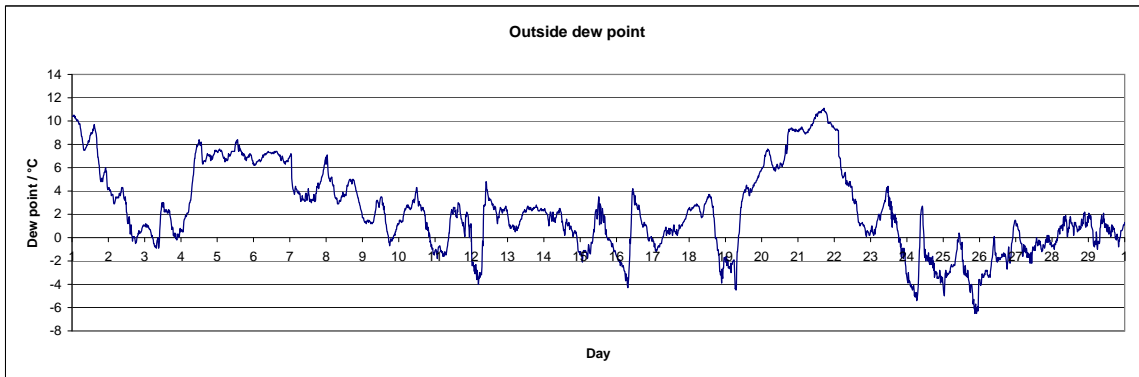
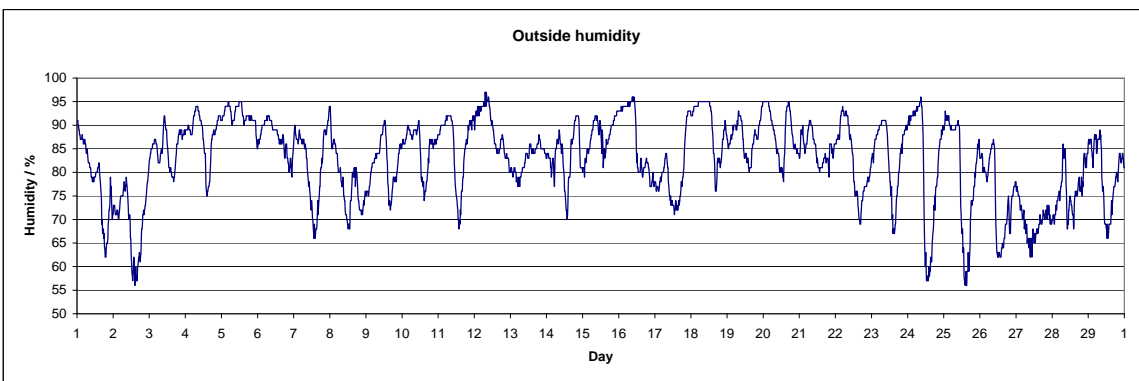
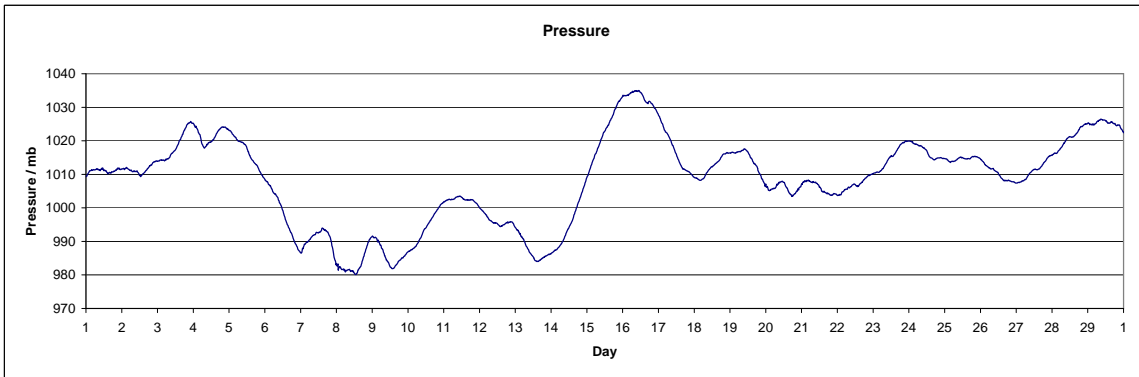


### Distribution of wind speed and direction

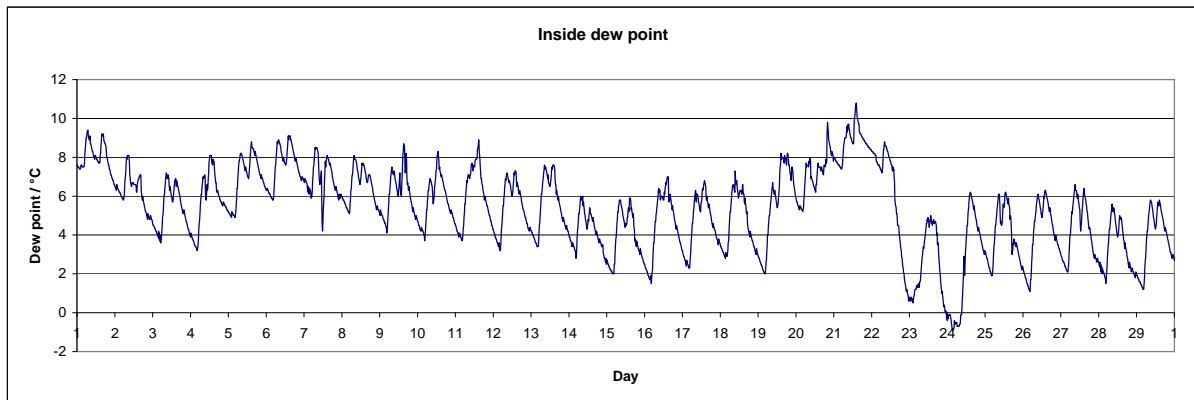
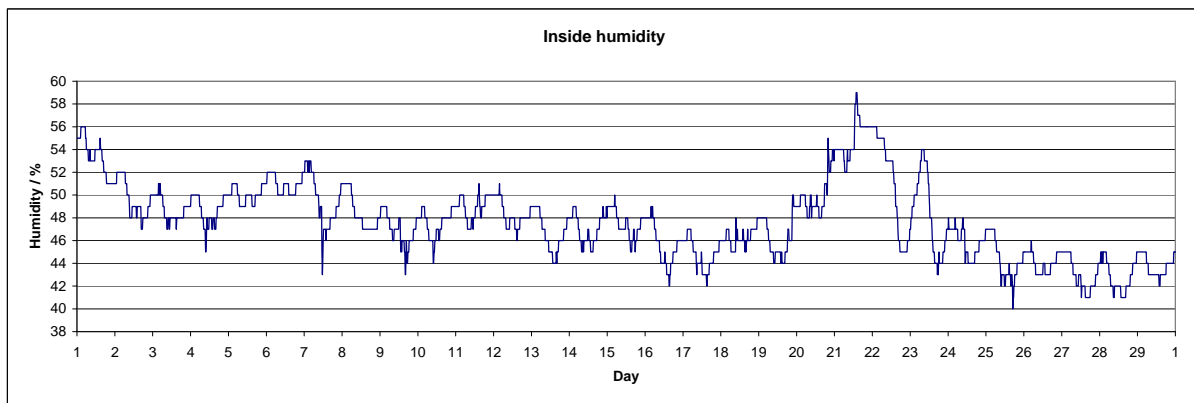
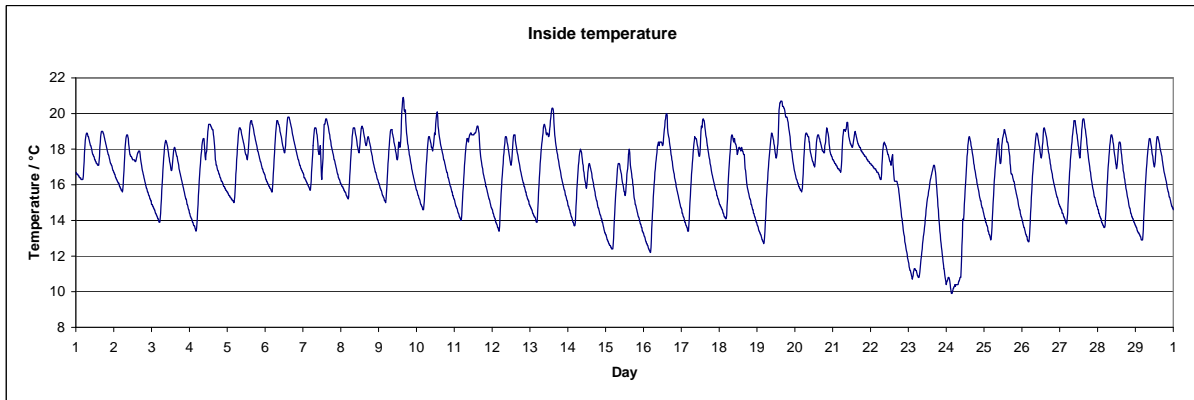




## February 2016



## February 2016



February 2016

